



# LOW COST ENERGY SAVING HEATER

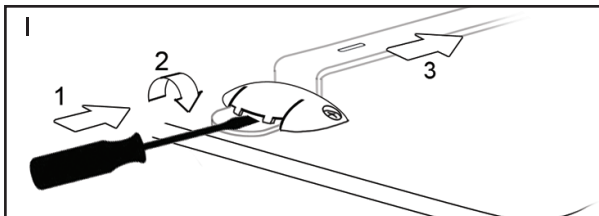
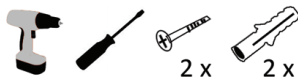


# LOW COST ENERGY SAVING HEATER

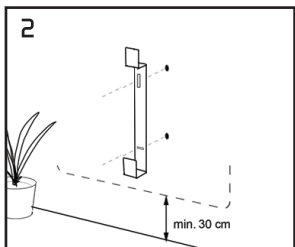
**ECOPANEL™** heaters are a fantastic slimline solution for providing efficient room heating at low cost. Using convection technology they produce economical "background" heating as well as blending seamlessly into your space with style. Suitable for rooms up to 12m<sup>2</sup> in size they are ideal for apartments, bungalows, cottages, extensions, loft conversions, caravans, conservatories, portable offices and small offices.



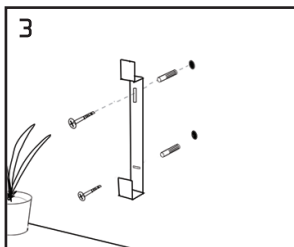
## Mounting Instructions



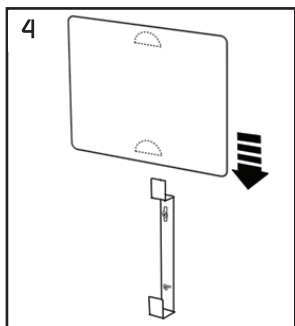
Before installing, remove the mounting bracket from the back of the heater using a flat head screwdriver as shown above.



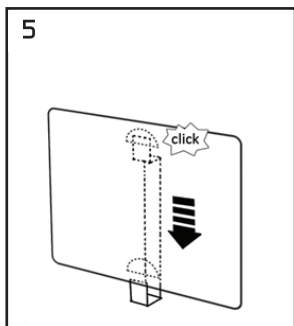
Use the bracket to mark the wall ready for drilling ensuring the bottom of the bracket is a minimum of 30cm from the floor.



Attach the bracket to the wall using the screws and plugs provided.



Slide the **eco°PANEL™** onto the bracket ensuring the top and bottom of the bracket locates correctly in the relevant fixing point.



Push the heater down until you hear a "click" which indicates the heater is fixed securely to the wall. To remove the heater from the wall for cleaning etc repeat point 1.

### Warning



- In order to avoid overheating, do not cover the panel heater with items such as wet towels or laundry.
- The heater must not be used if the panels are damaged.
- Do not use chemicals to clean panel surface.
- When painting the heater only use water based paint (no oil based paints).

### Important

The **eco°PANEL™** heater is designed for wall mounting only and is not certified for use in bathrooms.

Make sure the electric cord does not have prolonged contact with the heater.

It is completely normal if a slight odour occurs when it is switched on for the first time. This odour will disappear within a few hours.

The **eco°PANEL™** heater is an earthed appliance. To benefit from this safety feature, the panel must be connected to an earthed outlet.

Before drilling into the wall, check if the area is free from electrical wiring embedded behind the wall.

If the electric cord is damaged, it must be replaced by the manufacturer, its service agent or a similar qualified person.

### Specifications

**Electric Panel Heater**

Model : GC 022 UK-B  
220V-240V ~ 50Hz, 400W  
Made in China



Old appliances must not be disposed of with household waste but must be recorded separately. The levy for the municipal collection of individuals is charged. The owners of the equipment are required to bring the equipment to collection points, or leave at an appropriate collection. With this little extra effort you continue to contribute to that valuable raw materials recycled and pollutants can be treated specifically.

[www.ecopanelheater.co.uk](http://www.ecopanelheater.co.uk)

